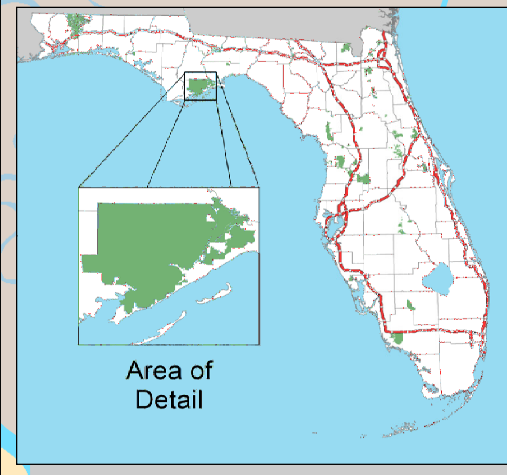
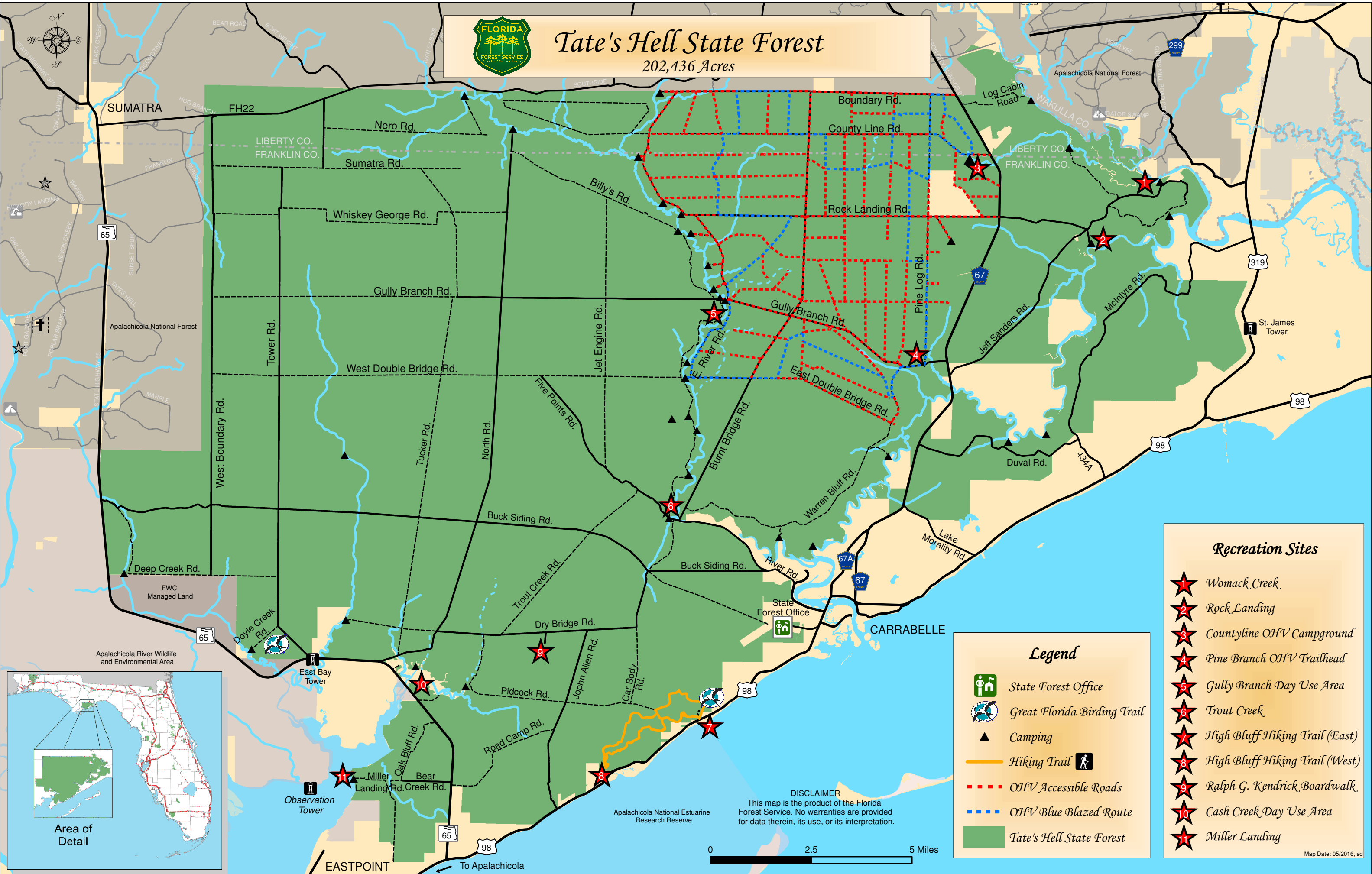




Tate's Hell State Forest

202,436 Acres



Legend

- State Forest Office
- Great Florida Birding Trail
- Camping
- Hiking Trail
- OHV Accessible Roads
- OHV Blue Blazed Route
- Tate's Hell State Forest

Recreation Sites

- Womack Creek
- Rock Landing
- Countyline OHV Campground
- Pine Branch OHV Trailhead
- Gully Branch Day Use Area
- Trout Creek
- High Bluff Hiking Trail (East)
- High Bluff Hiking Trail (West)
- Ralph G. Kendrick Boardwalk
- Cash Creek Day Use Area
- Miller Landing

DISCLAIMER
This map is the product of the Florida Forest Service. No warranties are provided for data therein, its use, or its interpretation.

